

API

NOTHING BEYOND MEASURE

Product Catalog

2023





Version 1.2 • Valid from 10.02.2023

Automated Precision Europe GmbH reserves all changes and misprints on this product catalog. The information is without guarantee. The product images may differ slightly from the actual product in some points. No liability is assumed for correctness and completeness. The content of the product catalog is protected by copyright.

2023 by Automated Precision Europe GmbH, 69126 Heidelberg

Preface

For more than 30 years API has pioneered laser-based equipment for measurement and calibration. API founder and CEO, Dr. Kam Lau, invented the laser tracker while working at USA's National Institute of Standards and Technology (NIST) to allow industrial robot accuracies to be determined.

Today API is a global company with its laser trackers, machine tool and robot calibration equipment, optical sensors and coordinate measuring products continuing to be the benchmark for metrology Automation, Precision and Innovation. API measurement and calibration products are at the heart of manufacturing organizations world-wide ensuring product quality and performance.

API also provides on-site dimensional inspection, metrology and calibration services. Headquartered in Rockville, Maryland USA, API has subsidiary operations in Germany, France, Brazil, China and India.

For more information, please visit www.apimetrology.com.

Content

Preface	3
Relevant Abbreviations.....	5
API Products	6
Dynamic 9D LADAR	6
Radian Pro	7
Radian Plus.....	8
Radian Core.....	9
Radian Extensions	10
vProbe	10
iScan3D.....	11
Active Target	12
SmartTrack Sensor.....	13
Machine Tool Calibration.....	14
XD Laser.....	14
BallBar	18
Spindle Analyzer.....	20
SwivelCheck.....	21
API Arm	22
API Arm ACE 6 Axis	22
API Arm ACE 7 Axis	23
Instrument Stands and Mounts.....	25
Calibration Tripods.....	27
Measurement Kits.....	27
SMR 0.5"	29
SMR 0.875"	30
SMR 1.5"	31
SMR Accessories 0.5"	33
SMR Accessories 1.5"	37
Cables and Power Supply	42

Weather Station and Temperature Sensor.....	44
Specific vProbe (Gen. 1) Accessories	45
vProbe and iScan3D General Accessories	46
Software.....	49
Brunson Extensions	50
MTC Accessories	51
Upgrades and Cases.....	56

Relevant Abbreviations

AL	Aluminum
CFB	Carbon Fiber Body
PC	Pieces
QTY	Quantity
SS	Stainless Steel
RB	Release Button

API Products

Dynamic 9D LADAR



Dynamic 9D LADAR is a breakthrough technology, representing the fastest, most accurate non-contact measurement system in the world. 9D LADAR's rapid, accurate data collection in real-time is set to revolutionize automated in-line production measurements and obsolete exiting conventional Laser Radar systems that require large sample averaging to obtain reasonable accuracy, effectively slowing data acquisition rates.

Range	Nr.
8m	193913
15m	193914
25m	193915

9D LADAR System Kit

193852	API MeasurePro
193916	LD Communication Cable
193917	LD Power Adapter and Cable
66789	UPS (Surge Protector)
193918	LD Carrying Case
29220	QVC Calibration Tripod
19254	Rough in Level
98545	Calibration Certificate
23020	USB Drive (All SW Installers + PRM files)
193919	1.5" Sphere (Matte)

9D LADAR System Kit - Options

101203	Invar Scale Bar 800mm Certified
193919	1.5" Spheres
193650	Computer Laptop
193903	API LD Stand
198829	Friction Link Adaptor for Brunson

Radian Pro



The API Radian PRO is the smallest, most accurate, versatile and intelligent laser tracker on the market. Its compact and rugged design allows motors, encoders and lasers to be mounted on the target axis. The Radian PRO offers all the benefits of API's advanced laser tracking technology.

Radian Pro Barebones Tracker Kit

Range	Nr.
20m	R100039
50m	R100040
80m	R100041



	Radian Gimbals and Radian-Controller
79593	Cable - 5m (Gimbal to Controller) - Radian
55539	Ethernet Cat6 GB Gray Molded Cross-over Cable, RJ45 (Male/Male) Cable
100199	20m and 50m: SMR - 1.5" Diameter - Break Resistant Hollow Core 50m Standard
100200	80m: SMR - 1.5" Diameter - Break Resistant Hollow Core 80m Standard
27047	Tool Bag for API Cables and Accessories
19254	Rough In Level
46864	Dust Cover with API Logo
23020	USB Flash Drive with API system software, user
93525	User Manual
98545	Calibration Certificate
17377	Two-year Warranty on API Manufactured Products (With the purchase of new system)
91455	Carrying Case - Hard Shell (with wheels) - Radian™
29220	Tracker calibration tripod
11415	Power Cable (Standard EU)
97512	Weather station with 1.5m communication cable, 1 air pressure, 1 air temperature and 1 material temperature sensor

Radian Plus



The Radian PLUS is smaller, lighter and easier to use than any other system of its kind in this price range. In addition, unlike other laser trackers on the market, it has no external controller. This means the Radian PLUS is wireless, controller-free and efficient. The features of the Radian PLUS enhance the mobility and ease of use of laser trackers.

Radian Plus Barebones Tracker Kit

Range	Nr.
50m	R101594
80m	R190629



	Radian Plus System
100199	20m and 50m: SMR - 1.5" Diameter - Break Resistant Hollow Core 50m Standard
100200	80m: SMR - 1.5" Diameter - Break Resistant Hollow Core 80m Standard
190081	Radian Plus Pelican Case w/custom foam
190069	Radian Plus AC/DC Power Supply Assembly
55539	Ethernet Cat6 GB Gray Molded Cross-over Cable, RJ45 (Male/Male) Cable
181019	Radian Plus Temperature Sensor, 6"
19254	Rough In Level
46864	Dust Cover with API Logo
23020	USB Flash Drive with API system software, user
R101597	Radian Plus - electronic user manual
R101596	Cal Software for Plus and Core
98545	Calibration Certificate
17377	Two-year Warranty on API Manufactured Products (with the purchase of new system)
55843	Wireless Antenna
11415	Power Cable (Standard EU)
29220	Tracker calibration tripod
101462	OT2/ Radian Plus/Core External Battery

Radian Plus IP Rated Barebones Tracker Kit

Range	Nr.
50m	R198622
80m	R198630

	Radian Plus IP Rated System
--	-----------------------------

Radian Core



Radian CORE Without cable. Without controller. The Radian CORE high-performance laser tracker offers laser tracking measurements at an affordable price. The compact, wireless system is ideal for mobile use, has very high measurement accuracy and is extremely user-friendly.

Radian Core Barebones Tracker Kit

Range	Nr.
50m	R190631

	Radian Core System
100199	SMR - 1.5" Diameter - Break Resistant Hollow Core 50m Standard
190081	Radian Core Pelican Case w/custom foam
190069	Radian Core AC/DC Power Supply Assembly
55539	Ethernet Cat6 GB Gray Molded Cross-over Cable, RJ45 (Male/Male) Cable
181019	Radian Core, Temperature Sensor, 6"
23020	USB Flash Drive with API system software, user
R101597	Radian Plus/Radian Core - electronic user manual
R101596	Cal Software for Plus and Core
98545	Calibration Certificate
17377	Two-year Warranty on API Manufactured Products (With the purchase of new system)
55843	Wireless Antenna
11415	Power Cable (Standard EU)
29220	Tracker calibration tripod
101462	OT2/ Radian Plus/Core External Battery



Radian Core IP Rated Barebones Tracker Kit

Range	Nr.
50m	R198629

	Radian Core IP Rated System
--	-----------------------------

Radian Extensions

vProbe



Agile, flexible and mobile - The vProbe wireless complete measurement solution. The vProbe's wireless technology is perfectly adapted for synchronization with the API Radian and PLUS and Radian PRO. With this combination, your mobility takes on undreamt-of dimensions - with increased flexibility and speed of measurement without sacrificing performance. vProbe makes it easier to move around your workspace without changing the position of your tracker or fixtures.

- Wireless portability
- Long range measurement
- Dynamic scanning
- Compact design
- Ergonomic
- Multiply stylus options
- Flexibility

R198614 vProbe Base Sales Kit

193440	vProbe V2 Unit
190850	Antennas 2.4/5.2GHz Terminal Mnt RP
82442	1.5 Retro-Probe Reset Sphere -6mm probe
R92130	RFID Stylus - 50mm (6mm diameter ruby tip)
R14452	RFID Stylus - 100mm (6mm diameter ruby tip)
193620	XTAR PB2S Black 2 Bay Charger and Portable Power Supply/ Xtar-PBS2-Black
193573	Panasonic NCR18650B-Protected Button Top Battery
14096	Power supply adapter I360 / vProbe
97445	I360 / vProbe Cable - power-supply
76215	Power Cable, 125V, 10A, for 90-110V AC only
23020	USB Flash Drive with API system software, user
190848	vProbe Case
98545	Calibration Certificate
17377	Two-year Warranty on API Manufactured Products (with the purchase of new system)

Usable with:

- Radian Pro ✓
Radian Plus ✓

iScan3D



The iScan3D is a compact and highly accurate handheld scanner. Integrated with Radian Plus and Pro Laser Trackers, iScan3D's crossed blue laser lines are capable of scanning in any direction. Dual stylus-mounting locations for probing of hidden features provide measurement flexibility with precise results. iScan3D can scan a wide variety of surface textures, including high-gloss and contrast areas. It also provides unique probing ability for hidden-point measurements.

- Point rate: 200.000 points / second
- Controllerless scanning
- Large scanning envelope
- 360° head rotation
- Ergonomic Design
- Multiply stylus options

193349 iScan3D System Kit

198780	iScan ver. 3 Unit
97445	I360/vProbe Cable – power-supply
14096	I360/vProbe Power supply adapter
100127	Calibration label
23020	USB Drive with API SW Installers
R14452	RFID Stylus – 100mm (6mm diameter ruby tip with ceramic shaft)
193505	Communication Cable 10m with USB optical – iScan3D
193480	iScan3D Hard Case
82442	1.5 Retro-Probe Reset Sphere -6mm probe (1.5RRS-6mm)
193882	iScan3D Calibration Artifact
193883	"iScan3D CA 1.5"" Sphere (Sanded - China)
193884	iScan3D Calibration Artifact Case/Bag

Optional available:

193933	Communication Cable 30m with USB optical – iScan3D
--------	--

Usable with:

- Radian Pro ✓
- Radian Plus ✓

Active Target



The Active Target combined with a RADIANT laser tracker enables automatic tracking and inspection of machine tools, CNC machines and industrial robots.

- Motorized Targeting
- 360° measurement
- Centering in SMR quality
- Safe and easy to use
- Versatile mounting

R87234 Active Target Sales Kit

R20923	Active Target Gimbal
73451	Battery, 3.7V 600mAh, Lithium-Ion, Lenmar DLK7002
76985	Universal Battery Charger, Li-Ion, Kodak
98545	Calibration Certificate
93525	User Manual
69785	Active Target Case with Foam
17377	Two-year Warranty on API Manufactured Products (with the purchase of new system)

Usable with:

- | | |
|-------------|---|
| Radian Pro | ✓ |
| Radian Plus | ✓ |
| Radian Core | ✓ |

SmartTrack Sensor



The SmartTrack Sensor provides dynamic accuracy using automatic 6DoF measurement to determine the position of the tracked point in real time, revealing the true position and orientation. This next generation sensor is essential for robot calibration.

- Real-time targeting
- Large measurement envelope
- Volumetric robotic compensation
- Unmatched versatility

R193082 SmartTrack Sensor Base Sales Kit

192334	STS Controller Box Assembly
R192431	SmartTrack Sensor (STS Gimbal Assembly)
101510	STS Cable Communication CC-V2-15M
192435	STS-Controller to Gimbal Cable Assembly
192463	STS CASE WILLARD (P/N 0806-0189 Rev C)
11415	Power Cable (Standard EU)
190069	OT2, AC/DC Power Supply Assembly
23020	USB Flash Drive with API system software, user
17377	Two-year Warranty on API Manufactured Products (with the purchase of new system)

Usable with:

- | | |
|--------------|---|
| Radian Pro | ✓ |
| Radian Plus* | ✓ |

*Only with RMS

Machine Tool Calibration

XD Laser



The XD laser interferometer simultaneously measures linear, angular, straightness and rolling errors for fast evaluation of machine tool errors.

- Rapid Measurement
- up to 6 DoF Measurement
- Measurement Flexibility
- Compact Design
- Software
- Global Support

93055 XD Laser 1D Kit

53144 XD Laser 1D Precision Kit

26520	XD-1D Laser Head (built to final configuration)
78413	Quick alignment fixture
46531	Power Supply - XD Laser (all models)
41631	4" optical mounting post
98231	6" optical mounting post
58464	45mm Turning mirror with 4" post
18386	Cross Holes Clamp
56211	Magnet Base - MB-PB (50 x 58 x 55 mm)
55539	Ethernet Cat6 GB Gray Molded Cross-over Cable, RJ45 (Male/Male) Cable
19254	Rough In Level
97512	Weather station with 1.5m communication cable, 1 air pressure, 1 air temperature and 1 material temperature sensor. Possible configurations may include additional or modified sensors and/or cables which will be added elsewhere to this order.
81488	CD with (as applicable) Calibration (Parameter) File, API Software, & Operating Manual
87722	XD-1 Calibration Certificate
22886	Carrying Case (small) - Hard Shell (With wheels) - XD1 and XD3
23457	7 pc Metric Hex L-key set
41643	1D/3D target retro w/housing
11415	Power Cable (Standard EU)
17377	Two-year Warranty on API Manufactured Products (with the purchase of new system)

**47828 XD Laser 3D Kit**

86413	XD-3D Laser Head
78413	Quick alignment fixture
46531	Power Supply - XD Laser (all models)
41631	4" optical mounting post
98231	6" optical mounting post
58464	45mm Turning mirror with 4" post
18386	Cross Holes Clamp
56211	Magnet Base - MB-PB (50 x 58 x 55)
55539	Ethernet Cat6 GB Gray Molded Cross-over Cable, RJ45 (Male/Male) Cable
19254	Rough In Level
97512	Weather station with 1.5m communication cable - 1 air pressure, 1 air temperature and 1 material temperature sensor Possible configurations may include additional or modified sensors and/or cables which will be added elsewhere to this order.
81488	CD with (as applicable) Calibration (Parameter) File, API Software, & Operating Manual
16695	XD-3 Calibration Certificate
22886	Carrying Case (small) - Hard Shell (With wheels) -XD1 and XD3
23457	7 pc Metric Hex L-key set
41643	1D/3D target retro w/housing
11415	Power Cable (Standard EU)
17377	Two-year Warranty on API Manufactured Products (with the purchase of new system)



70195 XD Laser 5D Kit
44672 XD Laser 5D Precision Kit

16313	XD-5D Laser Head (built to final configuration)
78413	Quick alignment fixture
46531	Power Supply - XD Laser (all models)
41631	4" optical mounting post
98231	6" optical mounting post
58464	45mm Turning mirror with 4" post
18386	Cross Holes Clamp
56211	Magnet Base - MB-PB (50 x 58 x 55)
55539	Ethernet Cat6 GB Gray Molded Cross-over Cable, RJ45 (Male/Male) Cable
19254	Rough In Level
97512	Weather station with 1.5m communication cable, 1 air pressure, 1 air temperature and 1 material temperature sensor. Possible configurations may include additional or modified sensors and/or cables which will be added elsewhere to this order.
81488	CD with (as applicable) Calibration (Parameter) File, API Software, & Operating Manual
53279	XD-5 Calibration Certificate
98141	Carrying Case (large) - Hard Shell (with wheels) - XD5 and XD6
23457	7 pc Metric Hex L-key set
89431	5D/6D sensor bracket (attached to a sensor)
89135	Sensor swing mounting adapter
61131	Cable - Sensor cable (12-pin, 1.5m length)
56531	Battery charger and power cord for wireless transceiver batteries
74654	Wireless transceiver (To be built to the final configuration)
56136	Communication cable (To be used instead of wireless connection)
46779	Power Supply, 3-prong, for XD Wireless Transceiver, Advanced Power Solutions
58843	Battery-Wireless Module - PEBPSQM71
46513	Antenna
11415	Power Cable (Standard EU)
17377	Two-year Warranty on API Manufactured Products (with the purchase of new system)



58536 XD Laser 6D Kit
16593 XD Laser 6D Precision Kit

15146	XD-6D Laser Head (built to final configuration)
78413	Quick alignment fixture
76942	Magnetic Base MB-PR (50x73x55)
46531	Power Supply - XD Laser (all models)
41631	4" optical mounting post
98231	6" optical mounting post
58464	45mm Turning mirror with 4" post
18386	Cross Holes Clamp
56211	Magnet Base - MB-PB (50 x 58 x 55)
55539	Ethernet Cat6 GB Gray Molded Cross-over Cable, RJ45 (Male/Male) Cable
19254	Rough In Level
97512	Weather station with 1.5m communication cable, 1 air pressure, 1 air temperature and 1 material temperature sensor. Possible configurations may include additional or modified sensors and/or cables which will be added elsewhere to this order.
81488	CD with (as applicable) Calibration (Parameter) File, API Software, & Operating Manual
65677	XD-6 Calibration Certificate
98141	Carrying Case (large) - Hard Shell (With wheels) - XD5 and XD6
23457	7 pc Metric Hex L-key set
46543	6D sensor (to be built to the final configuration)
89431	5D/6D sensor bracket (attached to a sensor)
89135	Sensor swing mounting adapter
61131	Cable - Sensor cable (12-pin, 1.5m length)
56531	Battery charger and power cord for wireless transceiver batteries
74654	Wireless transceiver (To be built to the final configuration)
56136	Communication cable (To be used instead of wireless connection)
46779	Power Supply, 3-prong, for XD Wireless Transceiver, Advanced Power Solutions
58843	Battery-Wireless Module - PEBPSQM71
46513	Antenna
84209	6D Roll reference level (To be built to the final configuration)
11415	Power Cable (Standard EU)
17377	Two-year Warranty on API Manufactured Products (with the purchase of new system)

BallBar



BallBar checks executed on CNC Machine Tool's provide positioning performance and comprehensive diagnosis of geometrical errors.

- Wireless Operation and extended battery
- Powerful diagnostic tool
- Early Detection Tool & Maintenance
- Easy to use Software
- Complete diagnostic package

193133 **Wireless BallBar Kit- Barebones**

192557	Wireless BallBar Body
192517	RF TXRX MOD Bluetooth Trace Ant
192558	BallBar Base
192559	BallBar Spindle
100990	Telescoping BallBar USB Drive
73451	Battery, 3.7V 600mAh, Lithium-Ion, Lenmar DLK7002
76985	Universal Battery Charger
101293	Telescopic BallBar System Certificate
100954	Telescoping BallBar User Manual
192600	BallBar Case w/ Custom Foam
17377	Two-year Warranty on API Manufactured Products (with the purchase of new system)



**193132 Wireless BallBar Kit- Standard
(Incl. Calibrator)**

192557	Wireless BallBar Body
192517	RF TXRX MOD Bluetooth Trace Ant
192558	BallBar Base
192559	BallBar Spindle
100990	Telescoping BallBar USB Drive
73451	Battery, 3.7V 600mAh, Lithium-Ion, Lenmar DLK7002
76985	Universal Battery Charger
192561	BallBar Calibration Fixture
192552	WBB-Short Radius Adapter
101293	Telescopic BallBar System Certificate
100954	Telescoping BallBar User Manual
192600	BallBar Case w/ Custom Foam
17377	Two-year Warranty on API Manufactured Products (with the purchase of new system)



**193134 Wireless BallBar Kit- Full
(Incl. Calibrator + ext. Bars)**

192557	Wireless BallBar Body
192517	RF TXRX MOD Bluetooth Trace Ant
192558	BallBar Base
192559	BallBar Spindle
100990	Telescoping BallBar USB Drive
73451	Battery, 3.7V 600mAh, Lithium-Ion, Lenmar DLK7002
76985	Universal Battery Charger
192561	BallBar Calibration Fixture
192552	WBB-Short Radius Adapter
192562	BallBar Ext 100
192563	BallBar Ext 300
101293	Telescopic BallBar System Certificate
100954	Telescoping BallBar User Manual
192600	BallBar Case w/ Custom Foam
17377	Two-year Warranty on API Manufactured Products (with the purchase of new system)

Spindle Analyzer



Spindle Check diagnoses machine tools spindle axis errors by quickly measuring rotational errors.

- Reduce maintenance time
- Dynamic spindle measurements
- Long-term spindle stability
- Flexibility

14450 Spindle Analyzer Dynamic and Thermal System Kit

70554 Spindle Analyzer Dynamic System Kit

70941 Spindle Analyzer Thermal System Kit

SwivelCheck



SwivelCheck utilizes a servo-drive to calibrate rotary axis and rotary and tilt tables integral to the machine tool calibration process.

- Simple operation
- Off-rotating axis mounting
- Flexible capability
- Portability
- Software
- Global

100400 SwivelCheck SC400 Kit

100102	SC95 Gimbal
100101	SC95 Controller
100088	SC95 gimbal to controller cable
11415	Power Cable (Standard EU)
55539	Ethernet Cat6 GB Gray Molded Cross-over Cable, RJ45 (Male/Male) Cable
50422	SwivelCheck Case
100315	Parlec ER Spring Collet 25mm MSC #71163778
100694	SMR - 1.5" Diameter - Break Resistant Prismatic 80m - Standard Spherically Mounted Retroreflector (SMR). Sphere roundness is Grade 50 (+/-50 microinch). Centering accuracy of +/-0.001 inch (+/-25 micron).
100424	SC95-MirrorHolder SubAssembly
17377	Two-year Warranty on API Manufactured Products (with the purchase of new system)

API Arm

API Arm ACE 6 Axis



API's premium range of cost-effective portable scanning arms offer accurate reverse engineering and production measurement solutions.

- Simple operation
- True portability
- Extended global measurement volume
- Magnetic docking

The API Arm 6 axis is designed for **tactile measurements** it is available in 2m, 2.5m, 3m, 4m, and 4.5m sizes to provide the perfect fit for your application.



ACE-6-2m	API Arm ACE 6 axis - 2 m
ACE-6-2.5m	API Arm ACE 6 axis - 2.5 m
ACE-6-3m	API Arm ACE 6 axis - 3 m
ACE-6-3.5m	API Arm ACE 6 axis - 3.5 m
ACE-6-4m	API Arm ACE 6 axis - 4 m
ACE-6-4.5m	API Arm ACE 6 axis - 4.5 m

API Arm ACE 6 Axis Kit

AA001	Measuring arm Ace
AA002	Suitcase for Ace
AA003	Accessories suitcase for Ace
AA004	PAA1 Probe Kit (6 mm)
AA005	Calibration Sphere with support
AA006	Hexagonal screw M6-25
AA007	Hexagonal screw M6-35
AA008	M8 screw with washer
AA009	Hexagonal key 5 mm
AA010	S10 Multiwire key
AA011	Flat key 12 mm
AA012	Power cable IEC C7 - Europlug
AA013	USB cable 3 m
AA014	Stylus Tool
AA015	Base plate with Brunson Attachment
AA016	18V power supply
AA017	Certification documents kit

API Arm ACE 7 Axis



API's premium range of cost-effective portable scanning arms offer accurate reverse engineering and production measurement solutions.

- Simple operation
- True portability
- Extended global measurement volume
- Magnetic docking

The API Arm 7 axis is designed for **scanning solutions** and for **tactile measurements** - it is available in 2m, 2.5m, 3m, 4m, and 4.5m sizes to provide the perfect fit for your application.

ACE-7-2m
ACE-7-2.5m
ACE-7-3m
ACE-7-3.5m
ACE-7-4m
ACE-7-4.5m

API Arm ACE 7 axis - 2 m
API Arm ACE 7 axis - 2.5 m
API Arm ACE 7 axis - 3 m
API Arm ACE 7 axis - 3.5 m
API Arm ACE 7 axis - 4 m
API Arm ACE 7 axis - 4.5 m

API Scanner Options:

- Open
- Wide
- Eyes

Available Lengths for all Scanners:

- 2.00m
- 2.50m
- 3.00m
- 3.50m
- 4.00m
- 4.50m

**API Arm ACE 7 Axis Kit**

AA001	Measuring arm Ace
AA002	Suitcase for Ace
AA003	Accessories suitcase for Ace
AA004	PAA1 Probe Kit (6 mm)
AA009	Hexagonal key 5 mm
AA011	Flat key 12 mm
AA012	Power cable IEC C7 - Europlug
AA013	USB cable 3 m
AA014	Stylus Tool
AA015	Base plate with Brunson Attachment
AA016	18V power supply
AA018	Set of screws
AA019	Dust cover for ACE Arm
AA020	Ethernet cable for M100i & ACE
AA021	Eyes / Wide / Open
AA017	Certification documents kit
AA022	Case Skyline
AA023	25mm sphere on M8 mount
AA024	Magnetic M8 plot for sphere
AA025	Box for USB and documentation
AA026	USB key
AA027	Polygonia
AA031	Tool for probe calibration
AA032	Sentinel USB dongle Driverless
AA033	Verisurf Plug-in

Instrument Stands and Mounts



Instrument Stand 41"– 57" Kit

Lightweight portable standard instrument stand for use with the API Quicklink System. The kit includes instrument stand and hard-shell carrying case with wheels.

Nr.:	Product
60058	Radian Pro Radian Plus Radian Core



Trimount Leveling Base Kit

API tripod for mounting a Quicklink compatible tracker to a table, machine tool or other surface. Includes leveling base with three adjustable legs and three magnetic drift nests.

Nr.:	Product
24785	Radian Pro Radian Plus Radian Core



Right Angle Mount 90° - Quicklink to Quicklink

This device is used for mounting an API Laser Tracker at a 90-degree (horizontal) angle to an API Quicklink stand.

Nr.:	Product
64239	Radian Pro Radian Plus Radian Core



Right Angle Mount – 90° Quicklink to 3.5" (horizontal)

Quicklink to 3.5" x 8 (Brunson instrument thread) - API Laser Tracker

Nr.:	Product
33258	Radian Pro Radian Plus Radian Core

Brunson Thread Adapter (BTA) – Quicklink to 3.5"



Quicklink to Brunson Thread adapter. This device adds a quicklink compatible base to any standard 3.5" x 8 instrument thread ("Brunson" thread).

Nr.:	Product
73427	Radian Pro Radian Plus Radian Core

Surface Mount



Surface mounting thread with 6 drill holes. Can be easily connected with a BTA.

Nr.:	Product
45336	Radian Pro Radian Plus Radian Core

Magnetic Base



Magnetic Base attaches API instruments with a Quicklink mount to any magnetic surface.

Nr.:	Product
R18491	Radian Pro Radian Plus Radian Core

Instrument Feet and Leg Nut/Bracket



Tripod feet for compensating for any uneven surfaces on the floor.

Nr.:	Product
100311	Radian Pro Radian Plus Radian Core

Friction Link Adaptor for Brunson



Quick Mount to 3.5" Thread for the Dynamic 9D LADAR. Applicable for mounting onto a Brunson tripod.

Nr.:	Product
198829	Dynamic 9D LADAR

Calibration Tripods



Tracker Calibration Tripod

Tracker calibration tripod for adjustable placement of an SMR during automated instrument compensations. Tripod adjusts via two extendable leg segments. Includes customized magnet adapter to accept 1.5" SMR.

Nr.:	Product
29220	Radian Pro Radian Plus Radian Core

Measurement Kits



Laser Tracker Tooling Kit - API 1.5"

Nr.:	Product
51000	Radian Pro Radian Plus Radian Core

Qty.	Article Description
10	Drift Nest (BT-A-Y-BPSM-Y)
1	Flat Ball Probe Seat, 25mm offset (BT-A-Z-BPS-X-25MM-Y)
1	Edge Ball Probe Seat, ½ cut out, 25mm offset (BT-A-Z-E-25MM-Y)
1	Ball Probe Seat 6mm, 25mm offset (BT-A-Z-BPS-6MM-25MM-Y)

Space for:

- 1.5" SMR
- 1 Rough-in-level (75 x 15 x 15mm)
- 4 Additional Pin Nests
- 2 Pieces of miscellaneous Tooling



Advanced API Metric Kit

Nr.:	Product
192449	Radian Pro Radian Plus Radian Core

Qty.	Article Description
6	SMR Drift Nests
2	Shankless Sphere Mt, SS
1	SMR Edge Tool (Small), SS
1	1.5" Pin Nests - 6 mm pin, 25 mm offset w/ negative cutout; SS
1	Pin Nests - 8 mm pin, 25 mm offset; w/ negative cutout; SS
1	Pin Nests - 8 mm pin, 25 mm offset; w/ negative cutout; SS
1	1.5" Pin Nest - 10 mm pin, 25 mm offset; w/ negative cutout; SS
1	1.5" Pin Nests - 12 mm pin, 25 mm offset; w/ negative cutout; SS
1	Construction Ball
1	Hard Point Adapter
1	Sphere Fit Adapter (1144)
1	Extension Bar 5"; SS
1	Extension Bar 10"; SS
1	Carrying Case



Advanced Tool Kit (English):

Nr.:	Product
86818	Radian Pro Radian Plus Radian Core

Qty.	Article Description
6	SMR Drift Nests
2	Shankless Sphere Mt, SS
1	SMR Edge Tool (Small), SS
2	1.5" Pin Nests - 1/4" pin, 1.000 offset w/ negative cutout; SS
1	1.5" Pin Nests - 3/8" pin, 1.000 offset; w/ negative cutout; SS
1	1.5" Pin Nests - 1/2" pin, 1.000 offset; w/ negative cutout; SS
1	1.5" Pin Nests - 10 mm pin, 25 mm offset; w/ negative cutout; SS
1	1.5" Pin Nests - 12 mm pin, 25 mm offset; w/ negative cutout; SS
1	Construction Ball
1	Hard Point Adapter;
1	Sphere Fit Adapter (1144);
1	Extension Bar 5"; SS
1	Extension Bar 10"; SS
1	Carrying Case

SMR 0.5"



SMR - 0.5" Diameter - Break Resistant Hollow Core 40m Standard*

Break-resistant hollow core 40 meter Spherically Mounted Retroreflectors (SMRs) standard. Composed of several parts and feature golden inlay coating. Certified for use with IFM and ADM over a range of 40 meters.

Nr.:	Range	Centering	Product
40645	40m	± 0.0127 mm	Radian Pro Radian Plus Radian Core



SMR - 0.5" Diameter - Break Resistant Prismatic 40m Standard*

Break-resistant prismatic 40 meter Spherically Mounted Retroreflectors (SMRs) standard feature golden inlay coating. Certified for use with IFM and ADM over a range of 40 meters.

Nr.:	Range	Centering	Product
99451	40m	± 0.0254 mm	Radian Pro Radian Plus Radian Core



SMR - 0.5" Diameter - Break Resistant Solid Body Gold

Break-resistant Spherically Mounted Retroreflectors (SMRs). Feature golden solid body. Certified for use with IFM and ADM.

Nr.:	Range	Centering	Product
23929	-	-	Radian Pro Radian Plus Radian Core

SMR 0.875"



SMR - 0.875" Diameter - Classic Hollow

Break-resistant classic hollow core Spherically Mounted Retroreflectors (SMRs). Composed of several parts. Certified for use with IFM and ADM.

Nr.:	Product
52269	Radian Pro Radian Plus Radian Core



SMR - 0.875" Diameter - Break Resistant Prismatic 40m Standard

Break-resistant prismatic 40 meter Spherically Mounted Retroreflectors (SMRs) standard. Certified for use with IFM and ADM over a range of 40 meters.

Nr.:	Product
96472	Radian Pro Radian Plus Radian Core

SMR 1.5"



SMR - 1.5" Diameter - Break Resistant - Solid Body Gold

Break-resistant Spherically Mounted Retroreflectors (SMRs). Feature golden solid body. Certified for use with IFM and ADM.

Nr.:	Range	Centering	Product
52306	-	-	Radian Pro Radian Plus Radian Core



SMR - 1.5" 50m Precision

Break-resistant hollow core 50 meter Spherically Mounted Retroreflectors (SMRs) feature golden coating. Certified for use with IFM and ADM over a range of 50 meters.

Nr.:	Range	Centering	Product
100222	50m	± 0.00254 mm	Radian Pro Radian Plus Radian Core



SMR - 1.5" 50m Standard

Break-resistant hollow core 50 meter Spherically Mounted Retroreflectors (SMRs) feature golden coating. Certified for use with IFM and ADM over a range of 50 meters.

Nr.:	Range	Centering	Product
100199	50m	± 0.0127 mm	Radian Pro Radian Plus Radian Core



SMR - 1.5" 80m Precision

Break-resistant hollow core 80 meter Spherically Mounted Retroreflectors (SMRs) feature golden coating. Certified for use with IFM and ADM over a range of 80 meters.

Nr.:	Range	Centering	Product
100231	80m	± 0.00254 mm	Radian Pro Radian Plus Radian Core



SMR - 1.5" 80m Standard

Break-resistant hollow core 80 meters Spherically Mounted Retroreflectors (SMRs) feature golden coating. Certified for use with IFM and ADM over a range of 80 meters.

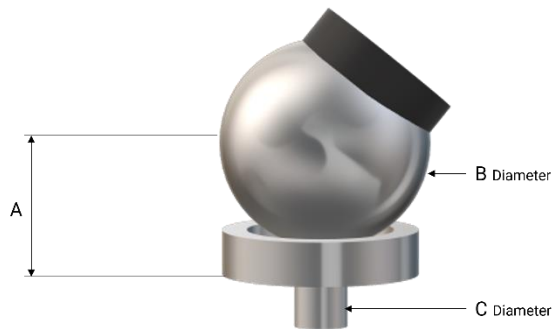
Nr.:	Range	Centering	Product
100200	80m	± 0.0127 mm	Radian Pro Radian Plus Radian Core



SMR - 1.5" Diameter - Break Resistant Prismatic 50m Standard *

Break-resistant prismatic 50 meter Spherically Mounted Retroreflectors (SMRs) standard. Certified for use with IFM and ADM over a range of 50 meters.

Nr.:	Range	Centering	Product
100897	50m	± 0.0254 mm	Radian Pro Radian Plus Radian Core



- A Offset
- B SMR Diameter – 0.5", 0.875" or 1.5"
- C Pin Diameter

SMR Accessories 0.5"



0.5 Sphere Mount - Negative

Sphere Mount for simplified handling and measurement with a shank and a recess in the offset. For SMR with the dimension 0.5".

Nr.:	Material	A	C
35929	Stainless Steel	1.0"	0.25"
85149	Stainless Steel	0.5"	0.25"
96131	Stainless Steel	0.5"	3/8"
87713	Aluminum	0.5"	5/16"



0.5 Shankless Sphere Mount – Negative

Shankless Sphere Mount for simplified handling and measurement with a recess in the offset. For SMR with the dimension 0.5".

Nr.:	Material	A
190527	Aluminum	10mm



0.5 Shankless Sphere Mount - Negative, Offset

Shankless Sphere Mount for simplified handling and measurement with a recess in the offset. For SMR with the dimension 0.5".

Nr.:	Material	A
86838	Aluminum	0.5"
34527	Stainless Steel	0.5"
80795	Aluminum	1.0"
67561	Stainless Steel	1.0"



0.5 Edge Sphere Mount - Outside Corner

Edge Sphere mount for precise and optimized measurement at edges and corners. For SMR with the dimension 0.5".

Nr.:	Material
96025	Aluminum



0.5 Foundation Sphere Mount

Foundation Sphere Mounts provide a permanent Laser Tracker target reference. Mounted into concrete foundation. For SMR with the dimension 0.5".

Nr.:	Material
77564	Stainless Steel



0.5 Laser Tracker -Reference Sphere Mount

Reference Sphere Mount as a permanent reference point. For SMR with the dimension 0.5". Made from steel.

Nr.:	Material
36109	Steel
EM47369	Stainless Steel



0.5 Shankless Sphere Mount

Shankless Sphere Mount for precise and optimized measurement with an offset. For SMR with the dimension 0.5".

Nr.	Material	A
EM41314	Aluminum	12mm



0.5 Sphere Mount Custom

Sphere Mount for precise and optimized measurement with an additional shank and an offset. For SMR with the dimension 0.5". Made from steel.

Nr.:	Material	A	C
89234	Steel	12mm	10mm

0.5 Sphere Mount



Sphere Mount for precise and optimized measurement with an additional shank and offset. For SMR with the dimension 0.5".

Nr.:	Material	A	C
EM47427	Aluminum	10mm	4mm
24522	Aluminum	10mm	5mm
46571	Aluminum	10mm	6mm
85821	Aluminum	10mm	8mm
61337	Aluminum	10mm	10mm
EM70503	Aluminum	12mm	5mm
EM84387	Aluminum	12mm	6mm
35804	Stainless Steel	12mm	6mm
66879	Aluminum	12mm	6.35mm
52314	Stainless Steel	12mm	6.35mm
EM98790	Aluminum	12mm	8mm
EM72959	Aluminum	12mm	10mm
51885	Aluminum	12mm	12mm
64127	Aluminum	12.7mm	6.35mm
54289	Aluminum	12.7mm	8mm
EM88975	Aluminum	25mm	4mm
57563	Aluminum	25mm	10mm
17126	Aluminum	25mm	12mm
53933	Aluminum	5/16"	1/4"
64582	Aluminum	0.5"	0.0980"
51315	Aluminum	0.5"	0.1258"



0.5 Sphere Mount - Hidden Point Bar Adapter

Adapter for a simplified measurement with a 0.5" SMR on centerline for hidden point applications. Various extensions possible. Made from steel.

Nr.:	Material
71181	Steel



0.5 Sphere Mount Threaded

Sphere Mount for simplified handling and fastening with a thread and a 0.5" offset. For SMR with the dimension 0.5". Made from aluminum.

Nr.:	Material	A	Thread
54326	Aluminum	0.5"	1/4-20
28773	Aluminum	0.5"	4-20
22028	Aluminum	0.5"	M3 x 0.5

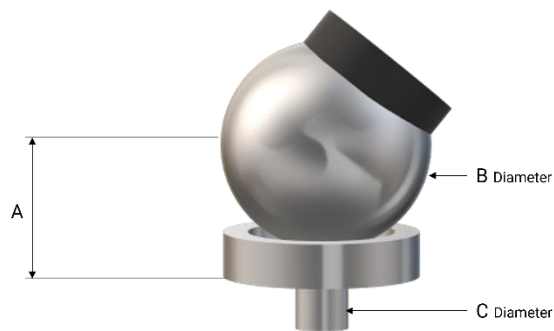


0.5 Sphere Mount, Target Corner

Sphere Mount for simplified handling and measurement with an offset. It will allow to target edges/surfaces. For SMR with the dimension 0.5".

Nr.:	Material	A
30636	Steel	10mm
13325	Stainless Steel	10mm
54434	Stainless Steel	12mm
EM58392	Steel	12mm
47025	Steel	0.5"
53748	Stainless Steel	0.5"

The product images may differ slightly from the actual product in some points.



- A Offset
- B SMR Diameter - 0,5", 0,875" or 1,5"
- C Pin Diameter

SMR Accessories 1.5"



1.5 Sphere Mount – Negative

Sphere Mount for simplified handling and measurement with a shank and a recess in the offset. For SMR with the dimension 1.5". Made from stainless steel.

Nr.:	Material	A	C
32770	Stainless Steel	25mm	10mm
77639	Stainless Steel	25mm	12mm
EM66919	Stainless Steel	25mm	6mm
65459	Aluminum	25mm	6mm
EM33798	Stainless Steel	25mm	8mm
75273	Aluminum	25mm	12mm
51386	Stainless Steel	1.0"	5/8"
52545	Stainless Steel	1.0"	0.25"
85048	Stainless Steel	1.0"	1/8"
17013	Aluminum	1.0"	1/8"
55901	Aluminum	1.0"	0.75"
47059	Aluminum	1.0"	7/8"
70531	Stainless Steel	1.0"	1.0"
68622	Aluminum	1.0"	1.0"



1.5 Edge Sphere Mount

Edge Sphere mount for precise and optimized measurement at edges and corners with an offset. For SMR with the dimension 1.5". Made from aluminum.

Nr.:	Material	A
EM53866	Aluminum	25mm
EM30789	Stainless Steel	25mm
72827	Aluminum	1.0"



1.5 Edge Sphere Mount - 2

Edge Sphere mount for precise and optimized measurement at edges and corners with an offset. For SMR with the dimension 1.5".

Nr.:	Material	A
42699	Aluminum	25mm
20471	Stainless Steel	25mm
46367	Stainless Steel	1.0"
46367	Aluminum	1.0"



1.5 Edge Sphere Mount - 2 – 1/4

Edge Sphere mount for precise and optimized measurement at edges and corners and locating inside corners or a radius with an offset. For SMR with the dimension 1.5".

Nr.:	Material	A
22852	Stainless Steel	25mm



1.5 Edge Sphere Mount -Outside Corner

Edge Sphere Mount for precise and optimized measurement at edges and corners with an offset and an additional tip for probing. For SMR with the dimension 1.5".

Nr.:	Material	A
62695	Aluminum	25mm
17294	Stainless Steel	25mm



1.5 Foundation Sphere Mount

Foundation Sphere Mount for precise and optimized measurement with reference nests embedded into the base. For SMR with the dimension 1.5".

Nr.:	Material
42974	Aluminum



1.5 Sphere Mount - Drift Nest

Drift Nest for temporary mounting of a SMR with the dimension 1.5".

Nr.:	Material
EM64271	Aluminum



1.5 Sphere Mount

Sphere Mount for precise and optimized measurement with an additional shank and an offset. For SMR with the dimension 1.5".

Nr.:	Material	A	C
EM92699	Aluminum	10mm	6mm
45872	Aluminum	10mm	8mm
86727	Aluminum	10mm	10mm
44074	Aluminum	10mm	12mm
12814	Aluminum	25mm	5mm
87282	Aluminum	25mm	6.35mm
80567	Aluminum	25mm	8mm
97918	Aluminum	25mm	10mm
87322	Aluminum	25mm	16mm
56376	Stainless Steel	1.0"	6mm
98475	Aluminum	1.0"	6mm
95946	Stainless Steel	1.0"	8mm
44016	Aluminum	1.0"	8mm
42163	Stainless Steel	1.0"	10mm
15126	Aluminum	1.0"	10mm
83858	Stainless Steel	1.0"	12mm
68651	Aluminum	1.0"	12mm
67257	Stainless Steel	1.0"	0.2090"
26052	Aluminum	1.0"	0.25"
51973	Aluminum	1.0"	7/16"



1.5 Shankless Sphere Mount, Magnetic Base

Shankless Sphere Mount for precise and optimized measurement with a 25mm offset and a particular base for magnetic surfaces. For SMR with the dimension 1.5".

Nr.:	Material	A
88226	Aluminum	25mm
20952	Stainless Steel	25mm



1.5 Shankless Sphere Mount

Shankless Sphere Mount for precise and optimized measurement with an offset. For SMR with the dimension 1.5".

Nr.:	Material	A
24660	Stainless Steel	25mm
49532	Aluminum	25mm
23792	Stainless Steel	1.0"
41836	Aluminum	1.0"



1.5 Sphere Mount - Hard Coat

Sphere Mount for precise and optimized measurement with an extra hard coating for more stability. For SMR with the dimension 1.5".

Nr.:	Material
21702	Aluminum



1.5 Sphere Mount - Hard Coat, Magnetic Base

Sphere Mount for precise and optimized measurement with an extra hard coating for more stability and a particular base for magnetic surfaces. For SMR with the dimension 1.5".

Nr.:	Material
99384	Aluminum



1.5 Sphere Mount - Hard Coat/Center Punch

Sphere Mount for exact markings of the fastening point. Consists of two components and includes a pin. With an extra hard coating for more stability. For SMR with the dimension 1.5".

Nr.:	Material
EM12571	Aluminum



1.5 Track -n- Punch Sphere Nest

Sphere Nest for exact markings of the fastening point. Consists of two components and includes a pin. For SMR with the dimension 1.5".

Nr.:	Material
31255	Aluminum



1.5 Sphere Mount - Pole Adapter

Pole Adapter for SMR with the dimension 1.5". It operates as a pole extension to reach inaccessible locations.

Nr.:	Material
99419	Aluminum



1.5" to 0.5" SMR Adapter

Adapter for SMRs to connect 1.5" and 0.5".

Nr.:	Material
20675	Aluminum



Magnetized Extension Bar

Magnetized extension bar with 10" length for simplified hand-guiding and precise measurement with a SMR. Available in individual versions with a release button (RB). For SMR with the dimension 0.5" – 1.5".



Nr.:	Material	Length		SMR
77771	Aluminum	124mm	with RB	0.5"
87923	Aluminum	5"	with RB	1.5"
77670	Aluminum	7"	with RB	0.5"
54180	Aluminum	10"	w/o RB	0.5"

The product images may differ slightly from the actual product in some points.

Cables and Power Supply



USB Scanner Cable 4.5 m

USB scanner cable usable on RapidScan with a length of 4.5m.

Nr.:	Length	Product
110005	4.5m	RapidScan



Additional Cable – Radian Pro

A cable with a length of 5m. Applicable to the Radian Pro Laser Tracker and connects the gimbal to the controller.

Nr.:	Length	Product
79593	5m	Radian Pro
90311	10m	Radian Pro
79594	20m	Radian Pro



Additional Cable - STS

A cable with a length of 5 – 20m. Applicable to the SmartTrack Sensor and connects the STS with the tracker.

Nr.:	Length	Product
86950	5m	STS
14105	10m	STS
14106	15m	STS
35595	20m	STS



Communication Cable 30m with USB optical – iScan3D

Nr.:	Product
193933	iScan3D



Power Supply Assembly (AC/DC)

Power supply for the Radian Laser tracker with a connection directly to the electrical grid.

Nr.:	Product
190069	Radian Plus Radian Core OT2 OT Core



External Battery

Nr.:	Product
101462	OT2 Radian Plus Radian Core



Assembled Battery Charger

Charger for the battery of the vProbe (Gen. 1). Can also be applied to the XD laser battery.

Nr.:	Product
100156	vProbe (Gen. 1) XD Laser

Weather Station and Temperature Sensor



Weather Station with 1.5m Communication Cable

Qty.	Article Description
1	Air pressure
1	Air temperature
1	Material temperature sensor

Possible configurations may include additional or modified sensors and/or cables which will be added elsewhere to this order.

Nr.:	Product
97512	Radian Pro XD Laser



Material Temperature Sensor - Add Sensor to Weather Station

Additional sensor for use directly on the surface of a specific component to measure the temperature.

Nr.:	Product
85239	XD Laser



Temperature Sensor 6"

Temperature sensor applicable for the Radian Laser Tracker series, the 9D LADAR, as well as for the OT2. The total length is 6".

Nr.:	Product
181019	Dynamic 9D LADAR Radian Plus Radian Core OT2 OT2 Core

Specific vProbe (Gen. 1) Accessories

Stylus Extension 50 – 450mm

50mm extension of the stylus on the probe for improved and precise measurement of e.g., hidden points.



Nr.:	Length
101114	50mm
101116	100mm
101118	200mm
101120	300mm
101122	350mm
101123	450mm



Stylus Adapter – Threads

Adapter can be applied to the probe to connect two threads.

Nr.:	Thread
62621	M2
14109	M5

For more stylus options for the vProbe (Gen. 1), please refer to the following chapter vProbe and iScan3D General Accessories or contact your local sales representative.

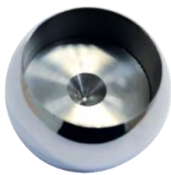
vProbe and iScan3D General Accessories



Reset Sphere

Reset Sphere for precise and optimized measurement specialized for the hard point adapter.

Nr.:	Product
37908	vProbe Gen. 1
	vProbe Gen. 2
	iScan3D



1.5 Retro-Probe Reset Sphere ~~Probe~~

Retro-Probe Reset Sphere for precise and optimized measurement with a 0.25" probe. Applicable with the vProbe Gen. 1, vProbe Gen. 2 and the iScan3D.

Nr.:	Material	Probe
19914	Aluminum	2mm
25763	Aluminum	3mm
82442	Aluminum	6mm
58156	Aluminum	0.25"

RFID Stylus

RFID Stylus a ruby sphere for use on the vProbe and the iScan3D. RFID contains all the probe's info (length and tip) and automatically transmits it to measurement software.



Nr.:	Material	Probe Length	Probe Tip Material	Tip Size
R101091	Ceramic	100mm	Ruby Sphere	0,2mm
R101082		100mm		1mm
R190164	Steel	50mm		2mm
R101085	CFB	200mm	Ruby Sphere	3mm
R14460		250mm		
R198770		300mm		
R14461		350mm		
R101087		400mm		
R14462		450mm		
R14459		150mm		
R51378	Ceramic	100mm	Ruby Sphere	6mm
R60261	Aluminum	50mm		
R14453	CFB	150mm		
R193483		200mm		
R14454		250mm		
R14455		300mm		
R14456		350mm		
R193577		400mm		
R14457		450mm		
R14458		500mm		
R14452	Ceramic	100mm		
R92130	Aluminum	50mm		
R198643	Steel	50mm	Ruby Sphere	8mm
R198652	Ceramic	100mm		
R193311	CFB	500mm	Ruby Sphere	12.7mm
R55079	Steel	50mm	Steel Sphere	
R43132		100mm		
R193380	CFB	200mm		
R193308		250mm		
R193309		300mm		
R193310		400mm		
R91573	Chrome Steel	10mm	Chrome Steel	0,5in
R101339	Steel	50mm	Steel Sphere	38,1mm



RFID Stylus Scribe Tip

RFID Stylus with up to 500mm total length and steel scribe tip sphere for use on the vProbe and the iScan3D. RFID contains all the probe's info (length and tip) and automatically transmits it to measurement software.

Nr.:	Material	Probe Length	Probe Tip
R14463	CFB	150mm	Steel
R14464		200mm	
R14465		250mm	
R14466		300mm	
R14467		350mm	
R14468		400mm	
R14469		450mm	
R14470		500mm	
R43143	Steel	50mm	60° Cone Angle
R43146	Ceramic	50mm	
R25997		100mm	



NCR18650B-Protected Button Top Battery 1pcs.

Rechargeable battery pack for use in the vProbe (2nd Gen.). Made by Panasonic.

Nr.:	Product
193573	vProbe Gen. 2

Power Supply Adapter vProbe

Power supply adapter to recharge the vProbe (2nd Gen.) batteries.



Nr.:	Product
14096	vProbe Gen. 2

Software



Robotic Measurement Software



Spatial Analyzer



Polyworks



Metrolog



VeriSurf



VeriComp

For detailed information or a quote customized to your individual requirements, please contact your local API sales representative.

Brunson Extensions



Brunson Extension Model 234

Brunson tripod length extension with a total length of 200mm – 1000mm.

Nr.:	Material	Length
10295	Steel	200mm
10295A	Aluminum	200mm
10296	Steel	400mm
10296A	Aluminum	400mm
10297	Steel	600mm
10297A	Aluminum	600mm
51946	Steel	1000mm
51946A	Aluminum	1000mm

MTC Accessories



Flatness Measurement Kit - 50mm, 100mm and 150mm Flatness Base

Nr.:	Product
28742	XD Laser



Pentaprism Sales Kit

Nr.:	Product
192325	XD Laser

Nr.:	Kit Content
77422	Pentaprism for XD Laser
45165	4" Post for Magnet Base
89117	M6 x 20 set screw(black)
46531	Power Supply - XD Laser (all models)
18386	Cross Holes Clamp



XD Laser Diagonal Measurement Kit

Nr.:	Product
192325	XD Laser



XD Laser Parallelism Measurement Kit

Nr.:	Product
66673	XD Laser



BallBar Calibration Fixture

Nr.:	Product
44489	BallBar



BallBar Software Upgrade Package with hardware calibration

Nr.:	Product
92808	BallBar

Power Supply



Power supply adapter to charge the XD Laser. Applicable to all models.

Nr.:	Product
46531	XD Laser

Optical Mounting Post



Nr.:	Length	Product
41631	4"	XD Laser
98231	6"	



1D/3D Target Retro with Housing

Nr.:	Product
41643	XD Laser



45mm Turning Mirror with 4" post

The turning mirror is used to reflect the laser beam along an alternate path when performing measurements along multiple axes.

Nr.:	Product
58464	XD Laser



Cross Holes Clamp

Clamp to optimally align the mounting posts and to bind them securely.

Nr.:	Product
18386	XD Laser



Magnet Base

Nr.:	Product
56211	XD Laser

Dimensions: 50 x 58 x 55mm



Rough In Level

Rough In Level for precise vertical and horizontal alignment of the components.

Nr.:	Product
19254	XD Laser Radian Pro Radian Plus Radian Core



Weather Station with 1.5m communication cable

Nr.:	Product
97512	XD Laser

Qty.	Article Description
1	Air pressure
1	Air temperature
1	Material temperature sensor

Possible configurations may include additional or modified sensors and/or cables which will be added elsewhere to this order.



Metric Hex L-key Set

Metric Hex L-key set for flexible mounting of the components. Consisting of seven pieces.

Nr.:	Product
23457	XD Laser



5D/6D Sensor Bracket

Attached to a sensor. On the right: Sensor Swing Mounting Adapter. Please see below.

Nr.:	Product
89431	XD Laser



Sensor Swing Mounting Adapter

Nr.:	Product
89135	XD Laser



Cable - Sensor cable

The sensor cable with a length of 1,5m and a 12-pin adapter. Applicable to the XD Laser Sensor.

Nr.:	Length	Product
61131	1.5m	XD Laser



Wireless Transceiver

Transceiver to establish a Wi-Fi connection during the calibration with the XD laser to work flexibly wireless.

Nr.:	Product
74654	XD Laser



Communication Cable

The Cable is being used instead of a wireless connection.

Nr.:	Product
56136	XD Laser



Power Supply, 3-prong, for XD Wireless Transceiver, Advanced Power Solutions

Charger for the wireless transceiver, in order to be able to work wireless as versatile as possible here as an option as well.

Nr.:	Product
46779	XD Laser



Battery-Wireless Module

Rechargeable battery for use in the wireless modules.

Nr.:	Product
58843	XD Laser



Antenna

Nr.:	Product
46513	XD Laser



6D Roll Reference Level

Nr.:	Product
84209	XD Laser



Power Cable (Standard EU)

Nr.:	Product
11415	XD Laser



Battery Charger

Power cord for wireless transceiver batteries.

Nr.:	Product
56531	XD Laser

Upgrades and Cases



Laser Tracker and vProbe Combo Case

This combo case includes space for an additional battery pack.

Nr.:	Product
193321	Radian Plus Radian Core OT2 OT2C



Pelican Case

This combo case includes a custom foam cutout.

Nr.:	Product
190081	Radian Plus Radian Core OT2 OT2C

Limited Availability



Single Golf Case - Black

Special case especially for the use of laser tracker tripods.

Nr.:	Product
67352	Tracker Tripod

API Automated Precision Europe GmbH

Phone: +49 (0) 6221 729 805 0

Fax: +49 (0) 6221 729 805 23

info.eu@apimetrology.com

Im Breitspiel 17, 69126 Heidelberg, Germany

www.apimetrology.com

